

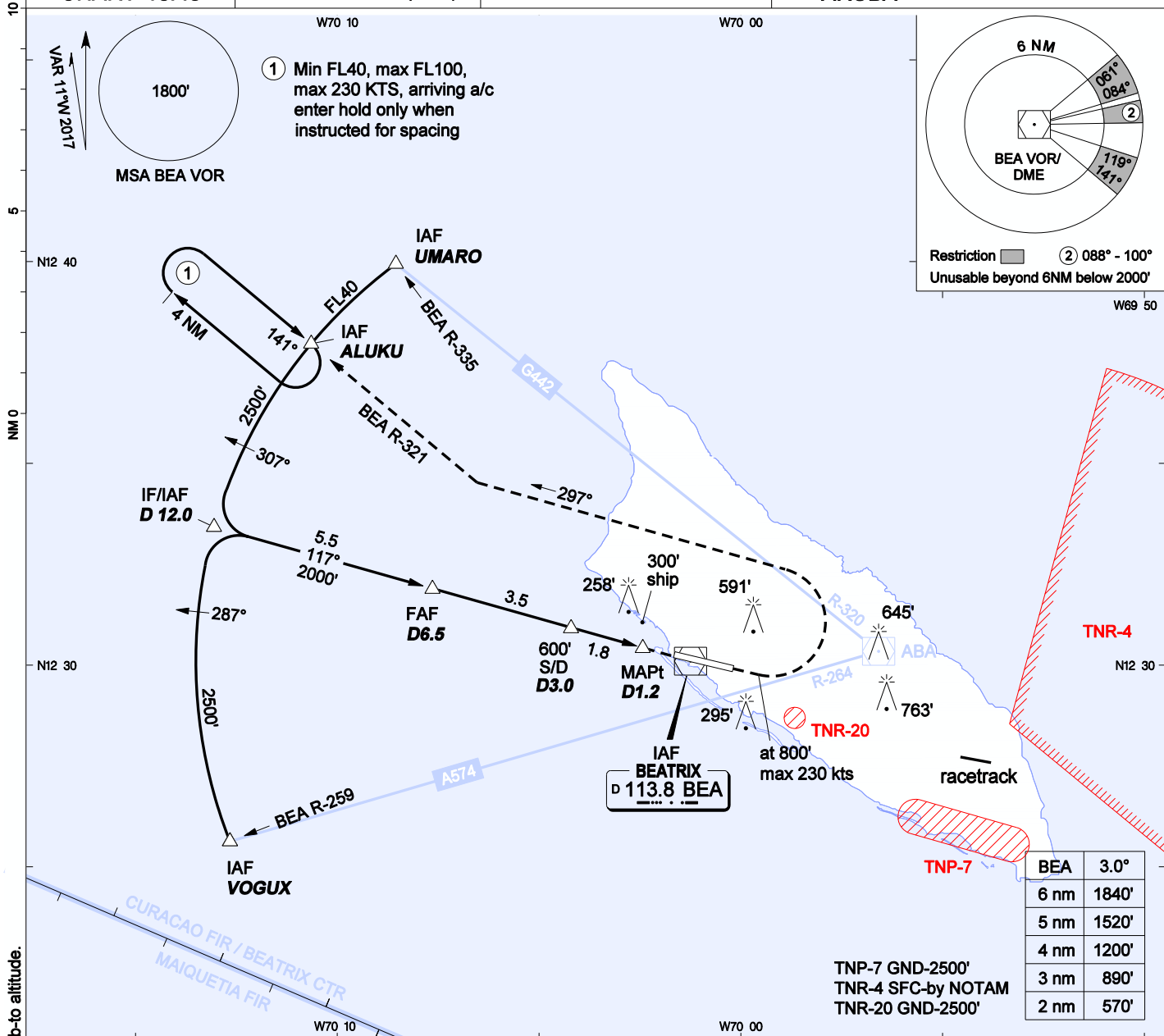
AIP DUTCH CARIBBEAN

**INSTRUMENT
APPROACH
CHART- ICAO**

AD ELEVATION: 62'
TRANS LEVEL: FL 40
TRANS ALT: 2500' (2438')

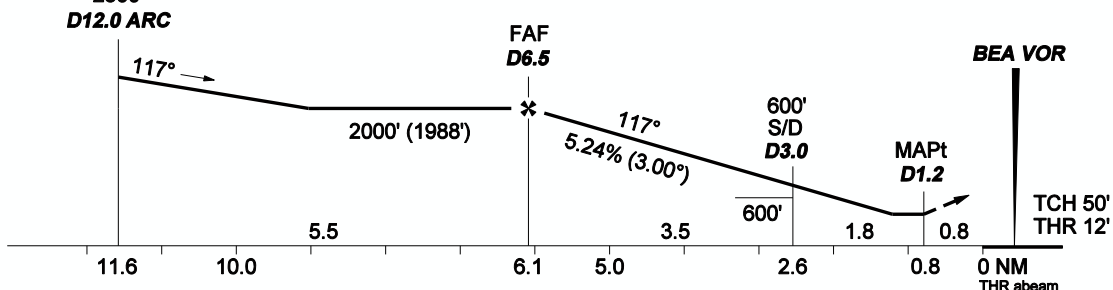
BEATRIX:
APP/TWR 120.9 GND 118.0
APRON 121.6 ATIS 132.1

**VOR Z RWY 11
REINA BEATRIX INT'L (TNCA)
ARUBA**



CHANGES: Min altitude UMARO-ALUKU, min holding ALUKU, missed app climb-to altitude.

MISSED APPR: Climb on rwy course to 800', climbing left turn to FL40 on course 297°, join BEA R-321 to ALUKU and hold, or as directed by ATC. Max 230 kts through first turn.



OCA(H)	A	B	C	D	GROUND SPEED - DESCENT RATE						
					KNOTS	70	90	100	120	140	160
STRAIGHT-IN	550' (538')	550' (538')	550' (538')	550' (538')	FT/MIN	372	478	531	637	743	849
CIRCLING	890' (828')	890' (828')	1160' (1098')	1160' (1098')							

1. Bearings are magnetic, altitudes, elevations and heights in feet and distance in NM.
Straight-in heights are relative to THR elevation, other heights are relative to AD elevation.

THR 11	N12 30	15.50	W070 01	38.98
MAPt D1.2	N12 30	25.75	W070 02	25.55
S/D D3.0	N12 30	55.64	W070 04	11.68
FAF D6.5 (39,551')	N12 31	53.88	W070 07	38.63
IF/IAF D12.0	N12 33	24.91	W070 13	02.48
ALUKU	N12 37	54.84	W070 10	35.21
UMARO	N12 39	51.07	W070 08	27.25
VOGUX	N12 25	38.26	W070 12	38.46